



**Ribbed Ankle Warmers**  
 • Also suitable as arm warmers  
 • Stirrup

- Acrylic/Nylon/Spandex

AWL01

ONE SIZE



**Stirrup Ankle Warmers**  
 • Stirrup Foot

- Acrylic

CWL04

ONE SIZE



AWL04

ONE SIZE



**Ankle Warmers**

- Acrylic

CWL05

ONE SIZE



AWL05

ONE SIZE



**Long Legwarmers**  
 • Stirrup

- Acrylic/Nylon/Spandex

CWL06

ONE SIZE



AWL06

AdSml/Med, AdLge/Xlge





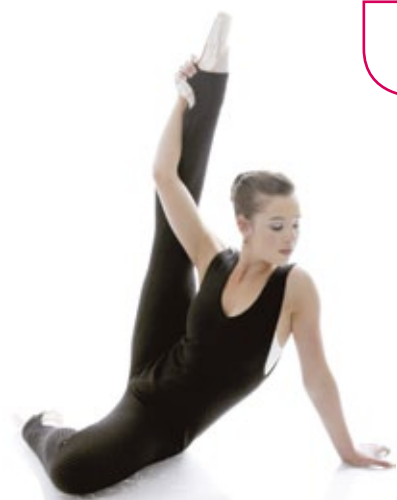
**Knitted Leggings**  
• Flag Detail

**Cotton/Spandex**

**CWL18**  
ChSml/Med, ChLge/Xlge



**AWL18**  
AdSml/Med, AdLge/Xlge



**Long Knitted All Over**  
• Stirrup Feet

**Acrylic/Nylon/Spandex**

*Limited Edition*

**CW06**  
ChMed, ChLge, ChXlge



**AW06**  
AdSml, AdMed, AdLge



**Warm Up Jumpsuit**  
• Drawcord Chest, Waist & Hem  
• Flag Detail • Relaxed Fit

**Cotton Polyester**

**CW10**  
ChSml, ChMed, ChLge, ChXlge



**AW10**  
AdSml/Med, AdLge/Xlge



**Knitted Warm Up Shorts**  
• Flag Detail

**Cotton/Spandex**

**CW15**  
ChSml/Med, ChLge/Xlge



**AW15**  
AdSml/Med, AdLge/Xlge



**Striped Long Legwarmer Cotton/Spandex**  
 • Stirrup  
 • Baby Locked Edge



**AWL16**  
 ONE SIZE



**Striped Arm Warmer Cotton/Spandex**  
 • Thumb Holes  
 • Baby Locked Edge



**AW17**  
 ONE SIZE



**Shrug Tactel®**  
 • Embroidered

**Tactel®**

*Limited Edition*

**CW11**  
 ChSml/Med, ChLge/Xlge



**AW11**  
 AdSml/Med, AdLge/Xlge



**Knitted Shrug Cotton/Spandex**  
 • Flag Detail

**Cotton/Spandex**

**CW12**  
 ChSml/Med, ChLge/Xlge



**AW12**  
 AdSml/Med, AdLge/Xlge



**Knitted Cross Over Cotton/Spandex**  
 • Flag Detail

**Cotton/Spandex**

**CW13**  
 ChSml/Med, ChLge/Xlge



**AW13**  
 AdSml/Med, AdLge/Xlge





**Knitted "DANCE" Jumper**  
• Flag Detail

**Cotton/Spandex**

**CW14**

ChSml/Med, ChLge/Xlge



**AW14**

AdSml/Med, AdLge/Xlge



**Warm Up Top**  
• Embroidered

**Tactel®**

**CW01**

ChSml, ChMed, ChLge, ChXlge



**AW01**

AdSml, AdMed, AdLge



**Cross Over**

**Tactel®**

**CX01**

ChSml, ChMed, ChLge, ChXlge



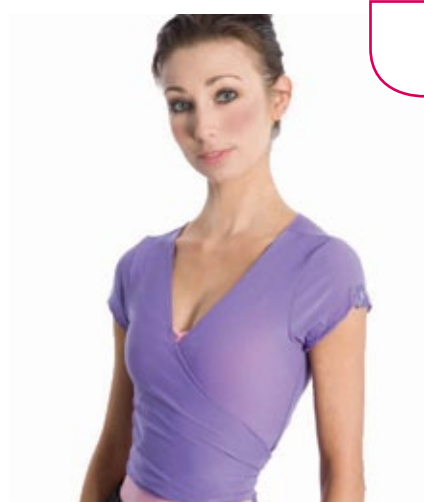
**AX01**

AdXsml, AdSml, AdMed, AdLge



**CX01L - Lycra®**

ChSml, ChMed, ChLge, ChXlge



**Stretch Cap Sleeve X Over**  
• Sheer Fabric  
• Flag Detail

**Nylon**

**CX05**

ChLge, ChXlge



**AX05**

AdSml/Med, AdLge/Xlge



*Limited Edition*



*Limited Edition*





**Stretch X Over**  
 • Sheer Fabric  
 • Flag Detail

**Nylon**

**CX06**

ChLge, ChXlge



**AX06**

AdSml/Med, AdLge/Xlge



**New Product**



**Merino Wool X over**  
 • Lightweight Thermal  
 • Australian Wool • Tie Front

**100% Merino Wool**

*Limited Edition*

**AX08**

AdSml, AdMed, AdLge



**Stretch Long Sleeve Top**  
 • Sheer Fabric  
 • Flag Detail

**Nylon**

**CAT22**

ChLge, ChXlge



**AAT22**

AdSml/Med, AdLge/Xlge



**Dance Sloppy Jo**  
 • Flag Detail • Relaxed Fit  
 • Drop Neck

**Cotton/Polyester**

**CAT23**

ChSml, ChMed, ChLge, ChXlge



**AAT23**

AdSml, AdMed, AdLge



**AAT23**

AdXlge



New Product



**Cozy Throw Over**  
 • Relaxed Fit • Embroidered  
 • Flag Detail

**Cotton Polyester**

*Limited Edition*

**CAT35**  
 ChSml, ChMed, Chlge, ChXlge



**AAT35**  
 AdSml, AdMed, AdLge



**AAT35**  
 AdXlge



New Product



**Cozy Jacket**  
 • Flag Detail • Embroidered  
 • Zip Front • Pockets

**Cotton Polyester**

*Limited Edition*

**CAT36**  
 ChSml, ChMed, Chlge, ChXlge



**AAT36**  
 AdSml, AdMed, AdLge



**AAT36**  
 AdXlge



New Product



**Short Hoodie**  
 • Flag Detail • Embroidered  
 • Zip Front • Pockets

**Cotton Unbrushed French Terry**

**AAT39**  
 AdXsml, AdSml, AdMed,  
 AdLge



New Product



**Long Hoodie**  
 • Flag Detail  
 • Zip Front • Pockets

**Cotton Unbrushed French Terry**

**AAT40**  
 AdXsml, AdSml, AdMed,  
 AdLge





**Cozy Jumpsuit**  
 • Flag Detail • Relaxed Fit  
 • Corded Chest, Waist & Hem

**Cotton Polyester**

*Limited Edition*

**CW18**

ChSml, ChMed, ChLge, ChXlge



**AW18**

AdSml-Med, AdLge-Xlge



**Sweat Pant**  
 • Roll Top • Embroidered  
 • Drawcord • Pockets

**Polyester**

**CAP4**

ChSml, ChMed, ChLge, ChXlge



**AAP4**

AdSml, AdMed, AdLge



**AAP4**

AdXlge



**Easy Fit Pant**  
 • Drawcord Waist & Hem  
 • Generous Fit • Flag Detail

**Cotton Polyester**

**CAP6**

ChSml, ChMed, ChLge, ChXlge



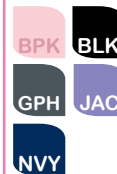
**AAP6**

AdSml, AdMed, AdLge



**AAP6**

AdXlge



**3/4 Easy Fit Pant**  
 • Drawcord Waist & Hem  
 • Flag Detail

**Cotton Polyester**

**CAP12**

ChSml, ChMed, ChLge, ChXlge



**AAP12**

AdSml, AdMed, AdLge



**AAP12**

AdXlge



New Product



**Cosy Pant**  
 • Flag Detail  
 • Pockets • Drawcord

**Cotton Polyester**

*Limited Edition*

**CAP37**

ChSml, ChMed, Chlge, ChXlge



**AAP37**

AdSml, AdMed, AdLge



**AAP37**

AdXlge



New Product



**Dance Track Pant**  
 • Front Pockets • Drawcord  
 • Flag Detail • Elastic Cuffs

**Cotton brushed French Terry**

*Limited Edition*

**CAP26**

ChSml, ChMed, Chlge, ChXlge



**AAP26**

AdXsml, AdSml, AdMed, AdLge



**AAP26**

AdXlge

